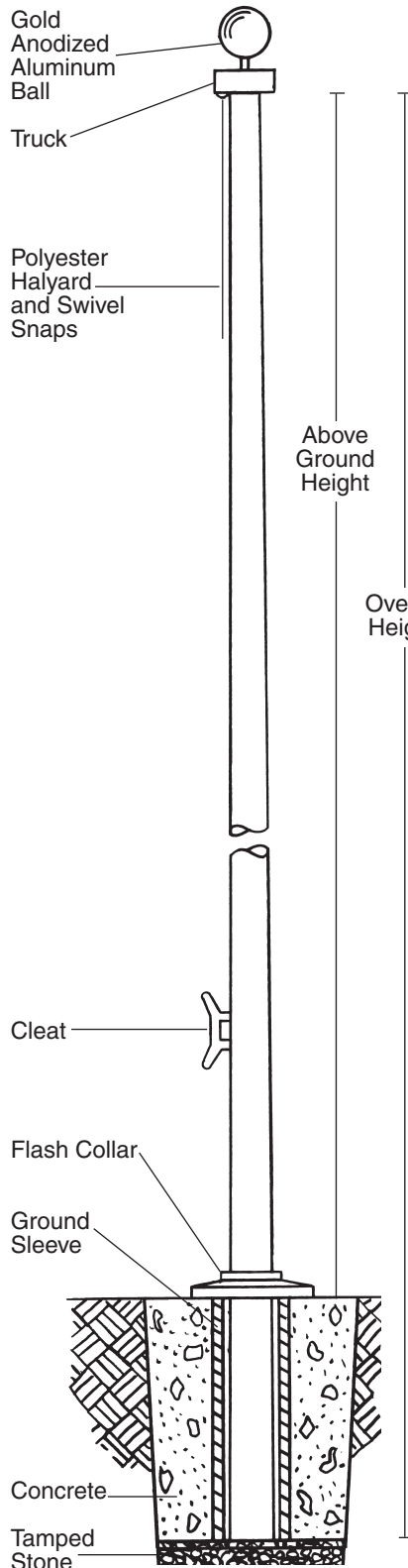
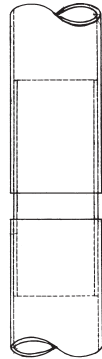


Fiberglass Flagpoles

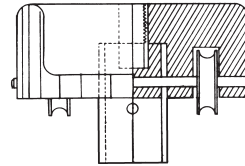
Severe Weather
External Flagpoles
25' to 60'



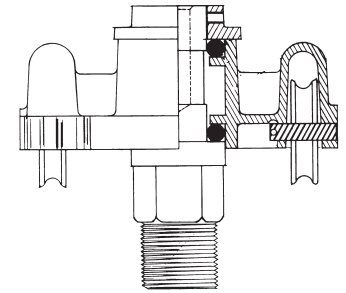
Field Splice Detail
(not to scale)



Fiberglass Stationary External Truck (25' to 40')



Aluminum Revolving External Truck (50' to 60')



Poles 50' and 60' are equipped with an internal field splice which is cemented and pinned with stainless pins to the bottom section. The top section simply slides over the self-aligning splice for easy field assembly.

Overall Height

Severe Weather Flagpole – External

	25SWX	30SWX	35SWX	40SWX	50SWX	60SWX
Above Ground Height	25'	30'	35'	40'	50'	60'
Burial Depth	3'	3'	4'	4'	5'	6'
Flagpole						
Overall Length	28'	33'	39'	44'	55'	66'
Top Diameter	3"	3"	3"	3"	4.2"	4.2"
Butt Diameter	6"	6.6"	6.8"	7"	10"	10.5"
Ground Sleeve						
	3' x 8"	3' x 8"	4' x 8"	4' x 8"	5'x14"	6'x14"
Fittings						
Gold Ball	6"	6"	8"	8"	10"	10"
Truck	FG	FG	FG	FG	ALUM	ALUM
Halyard Size	#10	#10	#10	#10	#12	#12
Cleat (powder coated)	8" AL	8" AL	8" AL	8" AL	10" AL	10" AL
Snaps (stainless steel)	3.25"	3.25"	3.25"	3.25"	4.5"	4.5"
Flash Collar	16"	16"	16"	16"	23"	23"
Pole Weight						
	75	107	167	217	397	629
Shipping Weight						
	117	154	224	279	595	857

Shipping weight includes weight of packaging and fittings.

Severe Weather External Flagpole

SPECIFICATIONS

Provide a Fiberglass Reinforced Composite (FRC) Ground Set Flagpole Model # _____SWX as manufactured by PLP Composite Technologies, Inc., Fitzwilliam, NH 03447.

The flagpole shall have a mounting height of _____' and _____' below grade for an overall length of _____'. The butt diameter shall be _____ inches and the top diameter _____ inches. The pole weight shall be approximately _____ lbs. and the total shipping weight of _____ lbs.

The flagpole shall be manufactured of fiberglass woven roving and polyester resin with 75% of the reinforcing fibers oriented in the axial plane for maximum stiffness and 25% in the radial plane for required hoop strength. Load calculations shall be based on AASHTO and NAAMM standards with the pole designed with a two to one (2:1) safety factor for 180 mph winds, unflagged, with a 1.3 gust factor.

The flagpole shall have an ENTASIS taper and shall be void of any vertical mold seams.

The flagpole shall be sanded smooth and coated with a high gloss Aliphatic Polyurea coating system which provides extended UV protection and weatherability.

The color of the flagpole shall be:

Standard: white, bronze, black, or other, as specified _____ (select one).

The flagpole shall be equipped with PLP standard fittings:

- A _____" gold anodized aluminum ball
- # _____ polyester halyard
- _____" powder coated aluminum cleat
- A _____" composite flash collar
- _____' x _____" fiberglass ground sleeve
- _____" stainless steel swivel snaps with vinyl covers
- External Truck (Pulley Assembly)
 - Double sheave fiberglass stationary truck with s/s securing screws (25SWX-40SWX), or
 - Double sheave aluminum revolving truck (50SWX-60SWX)

EXCEPTIONS: _____

PROJECT: _____

LOCATION: _____

DATE: _____