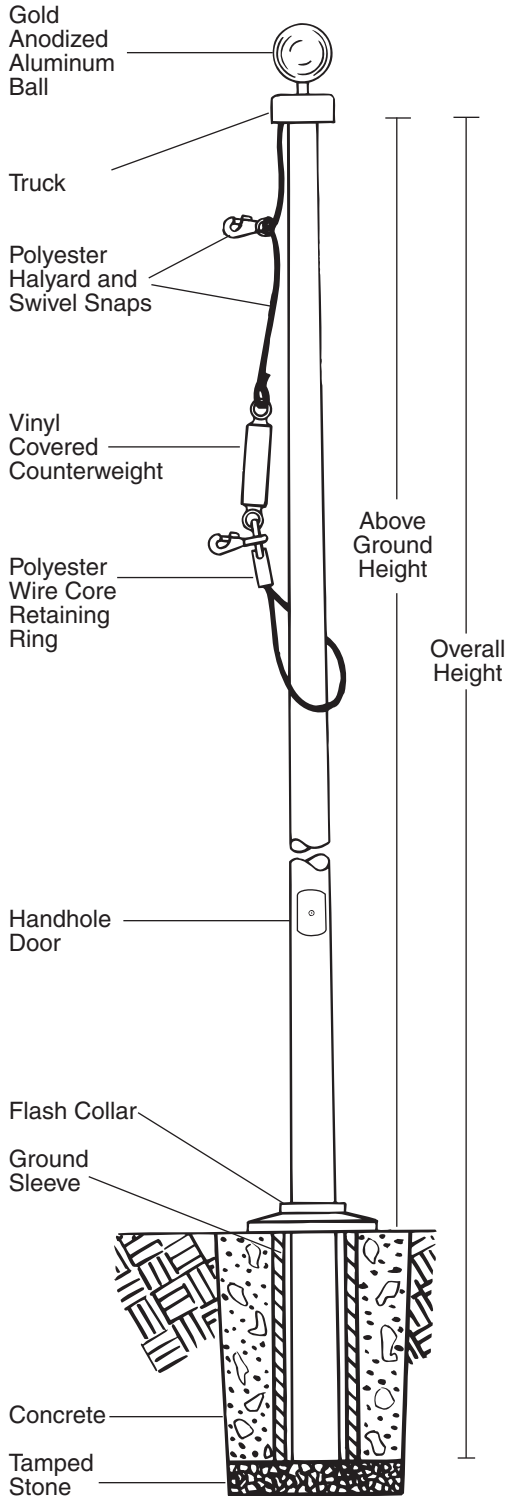
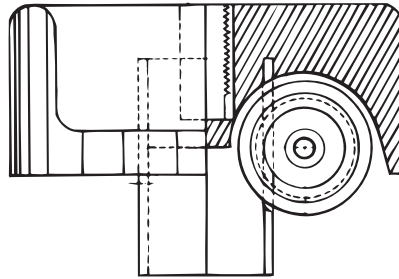


Fiberglass Flagpoles

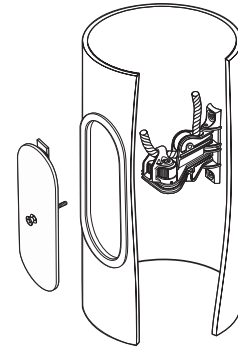
Severe Weather
Internal Flagpoles
25' to 40'



Fiberglass Stationary Internal Truck (25' to 40')



Internal Cam Cleat and Handhole Door 25' to 40'



Severe Weather Flagpole – Internal				
	25SWI	30SWI	35SWI	40SWI
Above Ground Height	25'	30'	35'	40'
Burial Depth	3'	3'	4'	4'
Flagpole				
Overall Length	28'	33'	39'	44'
Top Diameter	3"	3"	3"	3"
Butt Diameter	6"	6.6"	6.8"	7"
Ground Sleeve				
	3' x 8"	3' x 8"	4' x 8"	4' x 8"
Fittings				
Gold Ball	6"	6"	8"	8"
Truck-Internal	FG	FG	FG	FG
Halyard Size	#10	#10	#10	#10
Cleat (powder coated)	8" AL	8" AL	8" AL	8" AL
Snaps (stainless steel)	3.25"	3.25"	3.25"	3.25"
Flash Collar	16"	16"	16"	16"
Internal System	CAM	CAM	CAM	CAM
Retaining Ring	Small	Small	Small	Small
Counter Weight	Small	Small	Small	Small
Pole Weight				
	75	107	167	217
Shipping Weight				
	117	154	224	279

Shipping weight includes weight of packaging and fittings.

Severe Weather Internal Flagpole

SPECIFICATIONS

Provide a Fiberglass Reinforced Composite (FRC) Ground Set Flagpole Model # _____ SWI as manufactured by PLP Composite Technologies, Inc., Fitzwilliam, NH 03447.

The flagpole shall have a mounting height of _____' and _____' below grade for an overall length of _____'. The butt diameter shall be _____ inches and the top diameter _____ inches. The shaft weight shall be _____ lbs. and the total shipping weight shall be _____ lbs.

The flagpole shall be manufactured of fiberglass roving and polyester resin with 75% of the reinforcing fibers oriented in the axial plane for maximum stiffness and 25% in the radial plane for required hoop strength. Load calculations shall be based on AASHTO and NAAMM standards with the pole designed with a two to one (2:1) safety factor for 180 mph winds, unflagged, with a 1.3 gust factor.

The flagpole shall have an ENTASIS taper and shall be void of any vertical mold seams.

The flagpole shall be sanded smooth and coated with a high gloss Aliphatic Polyurea coating system which provides extended UV protection and weatherability.

The color of the flagpole shall be:

Standard: white, bronze, black, or other, as specified _____ (select one).

The flagpole shall be equipped with PLP standard fittings:

- A _____" gold anodized aluminum ball
- # _____ polyester halyard
- Polyester wire core retaining ring
- Vinyl covered counterweight
- Stainless steel and nylon internal cam cleat
- Handhole door with tamper resistant stainless steel screw
- Hex driver for security door
- Stainless steel swivel snaps with vinyl covers
- A _____" composite flash collar
- _____' x _____" fiberglass ground sleeve
- Truck (Pulley Assembly)
Stationary internal fiberglass truck with s/s securing screws

EXCEPTIONS: _____

PROJECT: _____

LOCATION: _____

DATE: _____